

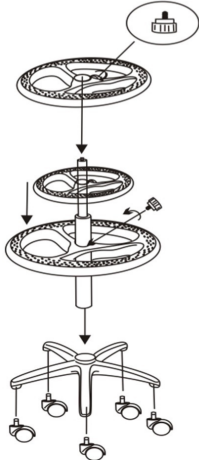
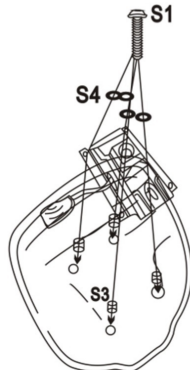
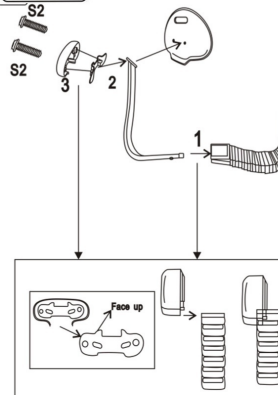


5001-2 (HALCON)

Instrukcja montażu
Assembly instruction
Montageanleitung

pokrywa cover Startseite	Oparcie Backrest Rückenlehne	Siedzisko Seat Sitzfläche	podstawa footing Fußring	Kółko Caster Rollen	Podstawa Base Basis	Podnośnik Gaslift Gaslift	Mechanizm Mechanism Mechanismus	wspornik bracket Halterung	Zestawy śrub Screw sets Schraubensätze										
									<table border="1"> <tr> <td>S1 X4 M6x25</td> <td></td> </tr> <tr> <td>S2 X2 M6x30</td> <td></td> </tr> <tr> <td>S3 X4 M8x18x10mm</td> <td></td> </tr> <tr> <td>S4 X4 M6x16x1.2</td> <td></td> </tr> <tr> <td>S5 X1 M5</td> <td></td> </tr> </table>	S1 X4 M6x25		S2 X2 M6x30		S3 X4 M8x18x10mm		S4 X4 M6x16x1.2		S5 X1 M5	
S1 X4 M6x25																			
S2 X2 M6x30																			
S3 X4 M8x18x10mm																			
S4 X4 M6x16x1.2																			
S5 X1 M5																			

X5

Krok 1
Step 1
Schritt 1Krok 2
Step 2
Schritt 2Krok 3
Step 3
Schritt 3Krok 4
Step 4
Schritt 4